



***LEHIGH ACRES FIRE CONTROL AND RESCUE DISTRICT
NOTICE OF MEETING***

**A REGULAR MEETING OF THE BOARD OF FIRE COMMISSIONERS WILL BE HELD AT
VETERAN'S PARK RECREATION CENTER, 55 S. HOMESTEAD RD., LEHIGH ACRES
AT 4:00pm, Wednesday, July 21, 2010**

AGENDA

CALL MEETING TO ORDER _____

PLEDGE OF ALLEGIANCE _____

INVOCATION _____

IN ATTENDANCE (ROLL CALL)

ADOPTION OF AGENDA _____

CONSENT AGENDA _____

- Approval of Minutes
- Treasurers Report

PUBLIC COMMENTS ON AGENDA ITEMS

(3 min limit; no discussion by Commission) _____

DEPARTMENT REPORTS

- Chief _____
- Staff _____
- DVP 6 and 19 _____
- Attorney's Report _____

COMMISSIONERS' REPORTS _____

UNFINISHED BUSINESS

- Confirm Proposed Millage for 2010/2011 (Ch Adams) _____

NEW BUSINESS

- Ratification of District 19 & 6 Contracts (Ch. Adams) _____

PUBLIC COMMENT ON NON-AGENDA ITEMS

(3 min limit; no discussion by Commission) _____

COMMISSIONER'S COMMENTS _____

ADMINISTRATIVE COMMENTS _____

ADJOURNMENT _____

Any person wishing to appeal an official decision made on any subject by the Board of Fire Commissioners, Lehigh Acres Fire Control and Rescue District, at a meeting or hearing will need a verbatim record of the proceedings. This record must include the testimony and evidence upon which the appeal is to be based. If an individual requires special aid or services as addressed in the Americans With Disabilities Act (ADA), please contact the Fire Chief at (239) 303.5300. If the Fire Chief is not available, please contact staff at the same number.

LEHIGH ACRES FIRE CONTROL AND RESCUE DISTRICT

SPECIAL COMMISSION MEETING

MINUTES

June 11, 2010

The June 11, 2010 Special Meeting of the Lehigh Acres Fire Control and Rescue District Board of Commissioners was opened at 4:00pm by Chairman Berndt. Present were Commissioners Adams, Berndt, Barrett and Hemingway; Chief Don Adams, Fire Marshal Ken Bennett, Finance Manager Ben VanKlingeren and Administrative Assistant Susan Platas. Attorney Richard Pringle was also in attendance.

After the Pledge of Allegiance, Commissioner Berndt asked Chief to give the invocation.

The purpose of this meeting is to discuss pros and cons of the SAFER Grant award from FEMA in the amount of \$8,971,851.00 and to move to accept the award or move to reject the award.

PUBLIC COMMENT (On Safer Grant)

Mike Holobinko, Local 1826 asked Commissioners to seriously consider accepting this grant.

Cathy Kruse, Lehigh resident requested Commissioners accept the grant.

Commissioner Berndt stated the floor is open for Commissioner discussion.

SAFER GRANT:

Commissioner Hemingway asked a question regarding submitting for the grant. Chief stated he would like to review the process.

Chief stated that we have to bring the firefighters back before August 14, 2010 and have to keep them until August 13, 2012. The grant is for 34 firefighter positions and the retention of 12 firefighters.

Commissioners asked Chief questions regarding the grant.

Bottom line is we asked for firefighters with insurance on them only. We can't go back and ask for any additional money under this award or it will void the grant. It doesn't include overtime, dependent health insurance, uniforms, new hire physicals, etc.

Walt Stevens spoke encouraging Commissioners to accept the grant.

Commissioner Berndt asked Attorney Pringle to review the Resolution for the SAFER Grant, section by section.

Commissioner Hemingway motioned to accept Resolution #100601 with a second from Commissioner Adams. This motion accepts the SAFER Grant. Roll call vote is as follows:

Commissioner Hemingway	aye
Commissioner Barrett	aye
Commissioner Berndt	aye
Commissioner Adams	aye

Commissioner Berndt stated he does not think dependent insurance will be paid for.

Commission Comments:

Commissioners thanked staff for working hard on this.

Chief thanked his staff who helped.

Adjourn 4:48 pm

LEHIGH ACRES FIRE CONTROL AND RESCUE DISTRICT

COMMISSION MEETING

MINUTES

June 17, 2010

The June 17, 2010 Commission Meeting of the Lehigh Acres Fire Control and Rescue District Board of Commissioners was opened at 4:00pm by Chairman Berndt. Present were Commissioners Adams, Berndt, Barrett and Hemingway; Chief Don Adams, Fire Marshal Ken Bennett, Finance Manager Ben VanKlingeren and Administrative Assistant Susan Platas. Attorney Richard Pringle was also in attendance.

After the Pledge of Allegiance, Commissioner Berndt asked Chief to give the invocation.

ADOPTION OF AGENDA

Chief requested to add Presentation/Introduction to new Assistant Chief and Commissioners to determine if they wish to hear a grievance or proceed to arbitration.

Commissioner Barrett motioned to adopt the Agenda as amended with a second from Commissioner Hemingway. Motion passed.

CONSENT AGENDA

- Fire Board Regular Meeting Minutes of May 19, 2010
- Treasurers Report
- Ambulance Fee Write Off's
- Fixed Asset Disposals

Commissioner Hemingway motioned to accept the Consent Agenda as presented with a second from Commissioner Adams. Motion passed.

PUBLIC COMMENT (On Agenda Items)

Kevin Shea, Lehigh Resident spoke on the SAFER Grant and the financial structure of the Department.

DEPARTMENT REPORTS

Chief Adams:

- Spoke on updating the Disaster Plan.
- Received over 300 applications for the positions opened due to the SAFER Grant. We have set criteria and will test and interview.
- Received a written response from Walt Stevens asking to continue negotiations.

DVP:

District 6 - Terry Dettmar stated they want to move forward and get negotiations hammered out.

PRESENTATION – Chief presented Diana Watson to the Board to be sworn in as Assistant Chief Administration/EMS of Lehigh Acres Fire Dept. She begins June 21, 2010.

COMMISSIONERS REPORTS

None.

UNFINISHED BUSINESS

Incentive to Retire – Chief Adams stated this has been on the table several times and we were waiting until we received the SAFER Grant before we considered this option. Commissioners asked questions of Chief. The Engineer who initially requested to be included in this list has since entered the DROP program of the FRS, therefore the paperwork has been changed to just include the 3 Lieutenants. Commissioner Berndt stated if any Commissioners have any interest in taking action, now is the time. No action taken.

Fee Resolution – Fire Marshal Bennett stated we need a resolution to adopt the amended fee schedule that is attached. Resolution #10-06-06 is a *Resolution of the Board of Commissioners of the Lehigh Acres Fire Control and Rescue District, Lee County, Florida, to establish user fees authorized by Florida law; to rescind all resolutions in conflict; to provide for liberal construction and for an effective date.* After some discussion, Commissioner Berndt motioned to adopt Resolution 10-06-06, Fire User Fees with a second from Commissioner Adams. Motion passed.

Fire Assessment Fee – Commissioner Hemingway is concerned what this fire department is going to be for next year and a few years after. We are covering 143 square miles. We have to take care of the present as well as look to the future.

Taking money out of our reserves is going to decrease any future movement this department can take. We have got to be prepared. He feels with our taxes going down, we need to put in an assessment fee. He feels this is the best way to care for the department and the citizens of Lehigh Acres. It will probably cost us \$40,000 to put this fire assessment fee on the ballot. Commissioner Hemingway motioned that we go ahead with the fire assessment fee at \$35 dollars a lot and have attorney Pringle to work up the legal documents for the Commissioner of Elections. Motion dies for lack of second. Attorney Pringle stated on or about July 2nd is the deadline to put the fire assessment fee on the ballot.

NEW BUSINESS

Budget Resolutions – Chief Adams stated there are 4 total Resolutions that need to be signed.

Finance Manager Ben VanKlengeren spoke on the Resolutions that needed to be adopted by Commissioners. Resolution #10-06-02 Amended the 09/10 **General Fund** carry forward amount to reflect the actual carry forward as per the 08/09 audit. Commissioner Hemingway motioned to adopt Resolution #10-06-02 with a second from Commissioner Adams. Motion passed.

Resolution #10-06-03 Amended the 09/10 **Impact Fee Fund** carry forward amount to reflect the actual (deficit) carry forward as per the 08/09 audit. Commissioner Barrett motioned to adopt Resolution #10-06-03 with a second from Commissioner Hemingway. Motion passed.

Resolution 10-06-04 Amended the 09/10 **General Fund** to eliminate the \$635,000 budgeted bad debt expense (and associated Ambulance Revenue) to reflect Governmental Accounting, Auditing, and Financial Reporting (GAAFR) standards. Commissioner Berndt motioned to adopt Resolution #10-06-04 with a second From Commissioner Adams.

Resolution 10-06-05 Amended the 09/10 **Impact Fee Fund** to account for Impact Fee expenditures (Impact Fee Refunds) and Interest Income during the fiscal year. Commissioner Hemingway motioned to adopt Resolution 10-06-05 with a second from Commissioner Barrett. Motion passed.

Proposed Millage for 2010/2011 – Chief is asking Commissioners to approved a 3.0000 tentative millage rate for the upcoming 2010/2011 budget.

Commissioner Berndt motioned that we set the tentative millage rate at 3.000 mills for purposes of working on the budget model with a second from Commissioner Hemingway. Motion carries.

Workshop and Hearing Dates for 2010/2011 – Commissioners were given dates for workshops and hearing dates for the upcoming 2010/2011 budget.

Workshop Dates: August 11, 2010; 4:00pm
August 17, 2010; 4:00pm
August 26, 2010; 4:00pm (if necessary)
Regular Comm Mtg: August 19, 2010; 4:00pm

Hearing Dates: September 9 5:01pm (Tentative Hearing)
September 22, 2010; 5:30pm (Final Hearing)
Regular Comm Mtg: September 22, 2010; 4:00pm

Commissioner Berndt motioned that we adopt the above schedule. Commissioner Adams seconded the motion. Motion passed.

MARC Unit Grant – Chief is requesting to make purchases in the approx amount of \$34,000 to buy parts for the MARC Unit. It's a six month turn

Commissioner Berndt motioned that we give the Chief the authority to spend \$34,000 on updating the MARC unit. That money will be reimbursed. Commissioner Adams seconded the motion and motion passed.

Grievance Proceeding - Chief stated an employee was terminated due to attendance problems. The employee has appealed and requesting to go to the next step. We can either go to the next step, which is having the Commissioners hear the case or send it to arbitration. Commissioner Berndt motioned that the Board allow the grievance to proceed to arbitration with a second from Commissioner Barrett. Motion carried.

PUBLIC COMMENT (On Non-Agenda Items)

Kevin Shea, Lehigh resident requested that the materials, the resolutions be posted on our web site.

COMMISSIONERS COMMENTS:

Commissioner Barrett will not be heading for reelection.

Adjourn 5:35pm.

Lehigh Acres Fire Control and Rescue District
Receipts and Disbursements
For the ninth month ending June 30, 2010

	Period To Date		Annual Budget	Year To Date		Budget Variance
	Actual	%		Actual	%	
Beginning Cash	-		\$ 13,550,874	\$ 13,550,874	100.00%	\$ (0.02)
Ad Valorem Taxes	848,493.73	9.12%	\$ 9,299,880	9,337,769.32	100.41%	37,889.32
Grants	69,462.00	0.00%	\$ -	69,462.00	0.00%	69,462.00
Donations	-	0.00%	\$ 200	206.45	103.23%	6.45
William Ziegler Memorial	-	0.00%	\$ -	150.00	0.00%	(150.00)
Paul J. Dube Paramedic Fund	-	0.00%	\$ -	-	0.00%	-
Inspection Fees	2,114.60	4.23%	\$ 50,000	22,391.52	44.78%	(27,608.48)
Ambulance Billing	86,670.76	8.67%	\$ 1,000,000	991,739.74	99.17%	(8,260.26)
Interest	2,870.64	14.35%	\$ 20,000	32,457.76	162.29%	12,457.76
Interest - Impact Fees	24.60	0.00%	\$ 400	289.32	0.00%	(110.68)
Interest-Ad Valorem	-	0.00%	\$ -	-	0.00%	-
Impact Fees	-	0.00%	\$ 1,460	-	0.00%	(1,460.00)
Proceeds from Insurance	-	0.00%	\$ -	550.00	0.00%	550.00
Miscellaneous Income	13,521.80	22.54%	\$ 60,000	98,838.98	164.73%	38,838.98
Other Government Revenue	-	0.00%	\$ 12,000	-	0.00%	(12,000.00)
Prevention Fees & Sales	-	0.00%	\$ -	-	0.00%	-
Total Receipts	\$ 1,023,158.13	4.26%	\$ 23,994,814	24,104,729.07	100.46%	109,615.07
Disbursements						
1100 Salaries	490,363.62	7.57%	6,473,494	4,616,682.88	71.32%	1,856,811.12
1200 Employee Benefits	265,444.83	6.17%	4,301,087	2,522,803.28	58.66%	1,778,283.72
3310 Professional Services	67,558.69	8.55%	789,921	443,325.73	56.12%	346,595.27
3340 Contract Services	-	0.00%	10,000	82.50	0.83%	9,917.50
3400 Travel Commission	-	0.00%	-	-	0.00%	-
3410 Communications	4,924.99	4.69%	105,000	54,420.55	51.83%	50,579.45
3430 Utilities	8,616.41	8.09%	106,500	68,705.64	64.51%	37,794.36
3440 Rentals	-	0.00%	3,000	-	0.00%	3,000.00
3450 Insurance/General	12,187.00	9.37%	130,000	110,445.11	84.96%	19,554.89
3460 Maintenance	11,959.32	4.33%	276,000	138,758.25	50.27%	137,241.75
3480 Promotional	45.00	0.90%	5,000	144.00	2.88%	4,856.00
3490 Other Current Charges	650.25	0.54%	121,500	16,204.88	13.34%	105,295.12
3510 Office	1,328.52	5.31%	25,000	10,413.59	41.65%	14,586.41
3520 Operating Supplies	34,335.45	8.95%	383,437	251,611.22	65.62%	131,825.78
6600 Capital	12.21	0.00%	82,017	77,754.21	0.00%	4,262.79
7700 Debt Service	-	0.00%	-	-	0.00%	-
8000 Bad Debt Expense	614.79	0.00%	-	-	0.00%	-
9000 Collection Fees	-	0.00%	10,000	1,366.27	13.66%	8,633.73
9900 Operating Reserves	-	0.00%	7,253,015	-	0.00%	7,253,015.00
9901 Capital Reserves	-	0.00%	2,919,843	-	0.00%	2,919,843.00
9902 Personnel Reserves	-	0.00%	-	-	0.00%	-
9905 Disaster Reserves	-	0.00%	1,000,000	-	0.00%	1,000,000.00
TOTAL DISBURSEMENTS	\$ 898,041.08	3.74%	23,994,814	\$ 8,312,718.11	34.64%	\$ 15,682,095.89
YTD NET				\$ 15,792,010.96		

These reports are intended for internal use only.

**LEHIGH ACRES FIRE CONTROL RESCUE DISTRICT
BREAKDOWN OF ACCOUNTS
FOR THE NINTH
MONTH ENDING JUNE 30, 2010**

	PERIOD TO DATE			YEAR TO DATE		
	Actual	%	Annual Budget	Actual	%	Budget Variance
1100 SALARIES						
1110 Administrative Salaries	33,985.22	6.15%	552,241	382,573.90	69.28%	169,667.10
1120 Regular Salaries	424,415.77	7.52%	5,640,109	3,926,238.47	69.61%	1,713,870.53
1130 Holiday Pay	19,592.03	40.69%	48,144	185,918.82	386.17%	(137,774.82)
1140 Overtime	12,370.60	16.49%	75,000	78,725.39	104.97%	(3,725.39)
1150 Sick Time	-	0.00%	113,000	43,226.30	38.25%	69,773.70
1160 Annual Sick Time Pay	-	0.00%	45,000	-	0.00%	45,000.00
Total Salaries	490,363.62	7.57%	6,473,494	4,616,682.88	71.32%	1,856,811.12
1200 EMPLOYEE BENEFITS						
1210 Payroll Tax Expense	37,512.71	7.71%	486,578	351,524.93	72.24%	135,053.07
1220 Retirement	98,425.24	6.92%	1,422,330	921,401.28	64.78%	500,928.72
1221 Retirement Liability	270.00	0.00%	-	2,430.00	0.00%	(2,430.00)
1230 Group Insurance	110,086.99	6.41%	1,718,179	1,018,796.16	59.30%	699,382.84
1240 Worker's Compensation	19,149.89	7.82%	245,000	164,212.33	67.03%	80,787.67
1250 Unemployment Compensation	-	0.00%	429,000	64,438.58	15.02%	364,561.42
Total Employee Benefits	265,444.83	6.17%	4,301,087	2,522,803.28	58.66%	1,778,283.72
3310 PROFESSIONAL SERVICES						
3311 Property Appraiser	31,922.33	23.65%	135,000	118,649.76	87.89%	16,350.24
3312 Legal Fees	14,146.44	17.68%	80,000	58,963.42	73.70%	21,036.58
3313 Medical Director	4,000.00	6.67%	60,000	36,000.00	60.00%	24,000.00
3314 Physicals	-	0.00%	4,920	4,179.06	84.94%	740.94
3315 Land Taxes	-	0.00%	4,500	2,458.90	54.64%	2,041.10
3316 Tax Collector's Commission	16,969.88	0.00%	470,001	188,255.40	40.05%	281,745.60
3317 Actuarial Study	-	0.00%	-	-	0.00%	-
3319 Miscellaneous Charges	520.04	0.00%	9,000	8,257.19	91.75%	742.81
3320 Audit	-	0.00%	25,000	26,335.00	105.34%	(1,335.00)
3321 Professional Service Fees	-	0.00%	1,500.00	227.00	15.13%	(1,273.00)
Total Professional Services	67,558.69	8.55%	789,921	443,325.73	6.13	344,049.27
3340 CONTRACT SERVICES						
3342 Outside Maintenance	-	0.00%	10,000	82.50	0.83%	9,917.50
3343 Ambulance & Medical Billing	-	0.00%	-	-	0.00%	-
3344 5 Year Plan	-	0.00%	-	-	0.00%	-
Total Contract Services	-	0.00%	10,000	82.50	0.83%	9,917.50
3400 TRAVEL/PER DIEM (COMMISSION)	-	0.00%	-	-	0.00%	-
3410 COMMUNICATIONS	4,924.99	4.69%	105,000	54,420.55	51.83%	50,579.45
3430 UTILITIES						
3431 Electric	6,897.67	8.62%	80,000	53,895.37	67.37%	26,104.63
3432 Utilities	1,718.74	6.49%	26,500	14,810.27	55.89%	11,689.73
Total Utilities	8,616.41	8.09%	106,500	68,705.64	64.51%	37,794.36
3440 RENTALS	-	0.00%	3,000	-	0.00%	3,000.00
3450 INSURANCE (GENERAL)	12,187.00	9.37%	130,000	110,445.11	84.96%	19,554.89
3460 MAINTENANCE						
3461 Building Maintenance	2,997.11	9.67%	31,000	27,129.30	87.51%	3,870.70
3462 Equipment Maintenance	101.95	0.25%	40,000	16,603.73	41.51%	23,396.27
3463 Vehicle Maintenance	4,904.70	5.16%	95,000	51,175.26	53.87%	43,824.74
3464 Maintenance Contracts	3,955.56	3.60%	110,000	43,849.96	39.86%	66,150.04
Total Maintenance	11,959.32	4.33%	276,000	138,758.25	50.27%	137,241.75

**LEHIGH ACRES FIRE CONTROL RESCUE DISTRICT
BREAKDOWN OF ACCOUNTS
FOR THE NINTH
MONTH ENDING JUNE 30, 2010**

	PERIOD TO DATE		Annual Budget	YEAR TO DATE		Budget Variance
	Actual	%		Actual	%	
3480 PROMOTIONAL	45.00	0.90%	5,000	144.00	2.88%	4,856.00
3490 OTHER CURRENT CHGS & OBLIGATIONS						
3491 Motel/Travel/Per Diem	56.40	0.94%	6,000	705.24	11.75%	5,294.76
3492 Training	-	0.00%	40,000	689.00	1.72%	39,311.00
3493 Administrative/Board	-	0.00%	5,500	3,175.00	57.73%	2,325.00
3494 Administrative/Elections	-	0.00%	-	-	0.00%	-
3495 Administrative/Office	593.85	2.97%	20,000	6,913.14	34.57%	13,086.86
3496 Contingencies	-	0.00%	50,000	4,722.50	9.45%	45,277.50
Total Other Current Chgs & Obligations	650.25	0.54%	121,500	16,204.88	13.34%	105,295.12
3510 OFFICE	1,328.52	5.31%	25,000	10,413.59	41.65%	14,586.41
3520 DEPARTMENT SUPPLIES						
3521 Department Supplies	4,040.25	6.73%	60,000	16,073.51	26.79%	43,926.49
3522 Paramedic Supplies	13,268.90	13.27%	100,000	110,120.92	110.12%	(10,120.92)
3523 Gas/Oil	9,669.31	7.74%	125,000	80,107.53	64.09%	44,892.47
3524 Uniforms	429.96	2.40%	17,886	10,406.44	58.18%	7,479.56
3525 Propane	-	0.00%	15,000	6,963.43	46.42%	8,036.57
3526 Computer Supplies	2,030.64	5.88%	34,551	5,049.24	14.61%	29,501.76
3527 Prevention Supplies	-	0.00%	-	-	0.00%	-
3528 Janitorial Supplies	4,814.42	32.10%	15,000	12,963.41	86.42%	2,036.59
3529 Training Supplies	-	0.00%	10,000	6,466.00	64.66%	3,534.00
3530 Shop Supplies	81.97	1.37%	6,000	3,460.74	57.68%	2,539.26
Total Department Supplies	34,335.45	69.48%	383,437	251,611.22	65.62%	131,825.78
6600 CAPITAL						
6620 Buildings	-	0.00%	-	-	0.00%	-
6630 Improvements/Other	-	0.00%	-	-	0.00%	-
6640 Machinery and Equipment	-	0.00%	-	-	0.00%	-
6641 Grants	-	0.00%	-	-	0.00%	-
6642 Impact Fees	12.21	0.00%	1,860	477.21	0.00%	1,382.79
6643 Computers	-	0.00%	10,695	7,815.00	73.07%	2,880.00
6644 Future Growth Fund	-	0.00%	-	-	0.00%	-
6645 Vehicles	-	0.00%	69,462	69,462.00	100.00%	-
6650 Const. In Progress	-	0.00%	-	-	0.00%	-
Total Capital Outlay	12.21	0.00%	82,017	77,754.21	0.00%	4,262.79
7700 DEBT SERVICE						
7710 Principal	-	0.00%	-	-	0.00%	-
7720 Interest on Loans	-	0.00%	-	-	0.00%	-
7730 Interest on Credit Line	-	0.00%	-	-	0.00%	-
Total Debt Service	-	0.00%	-	-	0.00%	-
8000 Bad Debt Expense	-	0.00%	-	-	0.00%	-
9000 Collection Fees	614.79	6.15%	10,000	1,366.27	13.66%	8,633.73
9900 OPERATING RESERVES	-	0.00%	7,253,015	-	0.00%	7,253,015.00
9901 CAPITAL RESERVES	-	0.00%	2,919,843	-	0.00%	2,919,843.00
9902 PERSONNEL RESERVES	-	0.00%	-	-	0.00%	-
9905 DISASTER RESERVES	-	0.00%	1,000,000	-	0.00%	1,000,000.00
Total Operating Expenditures	898,041.08	3.74%	23,994,814	8,312,718.11	34.64%	15,679,549.89

Balance Sheet
 As of 6/30/2010
 LEHIGH ACRES FIRE CONTROL DISTRICT (LFD)

(GENERAL FUND)

ASSETS

CURRENT ASSETS

101-0100	General Checking Account	\$	599,694.36	
101-0101	General M/Mkt Account	\$	14,975,153.91	
102-0100	Petty Cash	\$	200.00	
115-0098	Accounts Receivable-Insp. Fees-Collections	\$	815.00	
115-0099	Accounts Receivable/User Fees - Collections	\$	1,725,830.46	
115-0100	Accounts Receivable/Users Fees	\$	1,163,540.41	
115-0101	Acct. Receivable/Inspections	\$	1,854.60	
117-0099	Allowance for Doubtful Accts-Collections	\$	-1,725,830.46	
117-0100	Allowance for Doubtful Account	\$	-881,642.53	
117-0101	Allowance for Doubtful Account - Inspection	\$	-815.00	
118-0100	Due from Impact Fee Fund	\$	2,659,279.60	
	Total CURRENT ASSETS:			\$ 18,518,080.35

FIXED ASSETS

161-9001	Land	\$	267,663.53	
162-9001	Buildings	\$	7,970,018.18	
163-9001	Accum Dep-Buildings	\$	-776,435.93	
164-9001	Improvements/No Buildings	\$	181,473.54	
165-9001	Accum Dep-Improvements/No Bldg	\$	-70,834.01	
166-9001	Equipment and Furniture	\$	2,279,981.10	
166-9002	Vehicles	\$	6,564,739.24	
167-9001	Accum Dep-Equip & Furn	\$	-1,091,064.76	
167-9002	Accum Dep-Vehicles	\$	-3,590,470.31	
	Total FIXED ASSETS:			\$ 11,735,070.58

OTHER ASSETS

181-0100	Debt Ser./Compensated Absences	\$	722,411.07	
181-0101	Debt Service - Retiree's Insurance	\$	145,241.50	
	Total OTHER ASSETS:			\$ 867,652.57
	Total ASSETS:			\$ 31,120,803.50

LIABILITIES

CURRENT LIABILITIES

202-0100	Accounts Payable/ Trade	\$	2,884.65	
202-0400	Sales Tax Payable	\$	6.43	
210-0100	Compensated Absences	\$	722,411.07	
216-0104	Garnishment/ Child Support	\$	-2,105.61	
216-0105	Union Dues	\$	-2,127.75	
216-0108	Credit Union	\$	-23,506.84	
216-0110	457 Payable/Deferred Comp.	\$	-6,974.13	
216-0111	Retiree's Insurance Liability	\$	145,241.50	
216-0112	Retirement Payable	\$	98,425.24	
	Total CURRENT LIABILITIES:			\$ 934,254.56

FUND BALANCE-DEBT SERVICE FUND

280-0100	Equity/ General Fixed Assets	\$	17,263,875.59	
280-0101	Equity/Acc Dep-Gen Fixed Asset	\$	-5,528,805.01	
	Total FUND BALANCE-DEBT SERVICE FUND:			\$ 11,735,070.58
	Total LIABILITIES:			\$ 12,669,325.14

EQUITY

270-0000	Retained Earnings-Current Year	\$	2,241,324.78	
270-0000	Fund Balance - General Fund	\$	16,210,153.58	
	Total EQUITY:			\$ 18,451,478.36
				\$ 31,120,803.50

Income Statement
For The 9 Periods Ended 6/30/2010
LEHIGH ACRES FIRE CONTROL DISTRICT (LFD)

(GENERAL FUND)

		Period to Date	Year to Date
REVENUE			
311-0100	Ad Valorem Taxes	\$ 848,493.73	\$ 9,337,769.32
334-0100	Grants	\$ 69,462.00	\$ 69,462.00
336-0100	Donations	\$ -0.00	\$ 206.45
336-0101	William Ziegler Memorial	\$ -0.00	\$ 150.00
342-0500	Inspection Fees	\$ 2,114.60	\$ 22,391.52
342-0600	Ambulance Billing	\$ 86,670.76	\$ 991,739.74
361-0100	Interest	\$ 2,870.64	\$ 32,457.76
369-0100	Miscellaneous Income	\$ 13,521.80	\$ 98,838.98
369-0103	Proceeds from Insurance	\$ -0.00	\$ 550.00
Total REVENUE:		\$ 1,023,133.53	\$ 10,553,565.77
GROSS PROFIT:		\$ 1,023,133.53	\$ 10,553,565.77
EXPENSES			
522-1110	Administrative Salaries	\$ 33,985.22	\$ 382,573.90
522-1120	Regular Salaries	\$ 424,415.77	\$ 3,926,238.47
522-1130	Holiday Pay	\$ 19,592.03	\$ 185,918.82
522-1140	Overtime	\$ 12,370.60	\$ 78,725.39
522-1160	Annual Sick Time Pay	\$ 0.00	\$ 43,226.30
522-1210	Payroll Tax Expense	\$ 37,512.71	\$ 351,524.93
522-1220	Retirement	\$ 98,425.24	\$ 921,401.28
522-1221	Retirement Liability	\$ 270.00	\$ 2,430.00
522-1230	Group Insurance	\$ 110,086.99	\$ 1,018,796.16
522-1240	Worker's Compensation	\$ 19,149.89	\$ 164,212.33
522-1250	Unemployment Compensation	\$ 0.00	\$ 64,438.58
522-3311	Property Appraiser	\$ 31,922.33	\$ 118,649.76
522-3312	Legal Fees	\$ 14,146.44	\$ 58,963.42
522-3313	Medical Director	\$ 4,000.00	\$ 36,000.00
522-3314	Physicals	\$ 0.00	\$ 4,179.06
522-3315	Land Taxes	\$ 0.00	\$ 2,458.90
522-3316	Tax Collector's Commission	\$ 16,969.88	\$ 188,255.40
522-3319	Miscellaneous Charges	\$ 520.04	\$ 8,257.19
522-3320	Audit	\$ 0.00	\$ 26,335.00
522-3321	Professional Service Fees	\$ 0.00	\$ 227.00
522-3342	Outside Maintenance	\$ 0.00	\$ 82.50
522-3410	Communications	\$ 4,924.99	\$ 54,420.55
522-3431	Electric	\$ 6,897.67	\$ 53,895.37
522-3432	Water/Sewer/Trash Collection	\$ 1,718.74	\$ 14,810.27
522-3450	Insurance/ General	\$ 12,187.00	\$ 110,445.11
522-3461	Building Maintenance	\$ 2,997.11	\$ 27,129.30
522-3462	Equipment Maintenance	\$ 101.95	\$ 16,603.73
522-3463	Vehicle Maintenance	\$ 4,904.70	\$ 51,175.26
522-3464	Maintenance Contracts	\$ 3,955.56	\$ 43,849.96
522-3480	Promotional	\$ 45.00	\$ 144.00
522-3491	Motel/Travel/Per Diem	\$ 56.40	\$ 705.24
522-3492	Training	\$ 0.00	\$ 689.00
522-3493	Administrative/ Board	\$ 0.00	\$ 3,175.00
522-3495	Administrative/ Office	\$ 593.85	\$ 6,913.14
522-3496	Contingencies	\$ 0.00	\$ 4,722.50
522-3510	Office Supplies	\$ 1,328.52	\$ 10,413.59
522-3521	Department Supplies	\$ 4,040.25	\$ 16,073.51
522-3522	Paramedic Supplies	\$ 13,268.90	\$ 110,120.92
522-3523	Gas/Oil	\$ 9,669.31	\$ 80,107.53
522-3524	Uniforms	\$ 429.96	\$ 10,406.44
522-3525	Propane	\$ 0.00	\$ 6,963.43
522-3526	Computer Supplies	\$ 2,030.64	\$ 5,049.24
522-3528	Janitorial Supplies	\$ 4,814.42	\$ 12,963.41
522-3529	Training Supply	\$ 0.00	\$ 6,466.00
522-3530	Mechanical Maintenance Supply	\$ 81.97	\$ 3,460.74
522-6643	Computers	\$ 0.00	\$ 7,815.00
522-6645	Vehicles	\$ 0.00	\$ 69,462.00
522-9000	Collection Fees	\$ 614.79	\$ 1,366.27
Total EXPENSES:		\$ 898,028.87	\$ 8,312,240.90
Net Income (Loss):		\$ 125,104.66	\$ 2,241,324.87

Balance Sheet
 As of 6/30/2010
 LEHIGH ACRES FIRE CONTROL DISTRICT (LFD)

(IMPACT FEE FUND)

ASSETS

CURRENT ASSETS

101-0102 Impact Fee Account \$ 136,049.78

Total CURRENT ASSETS: \$ 136,049.78

Total ASSETS: \$ 136,049.78

LIABILITIES

CURRENT LIABILITIES

217-0100 Due to General Fund \$ 2,659,279.60

223-0100 Deferred Revenues - Impact Fees \$ 136,237.58

Total CURRENT LIABILITIES: \$ 2,795,517.18

EQUITY

248-0100 Equity/ Impact Fees \$ -2,659,279.60

270-0000 Retained Earnings-Current Year \$ -187.80

Total EQUITY: \$ -2,659,467.40

\$ 136,049.78

Income Statement
 For The 9 Periods Ended 6/30/2010
 LEHIGH ACRES FIRE CONTROL DISTRICT (LFD)

(IMPACT FEE FUND)

		Period to Date	Year to Date
REVENUE			
361-0101	Interest - Impact Fees	\$ 24.60	\$ 289.32
	Total REVENUE:	\$ 24.60	\$ 289.32
	GROSS PROFIT:	\$ 24.60	\$ 289.32
EXPENSES			
522-6642	Impact Fees	\$ 12.21	\$ 477.21
	Total EXPENSES:	\$ 12.21	\$ 477.21
	Net Income (Loss):	\$ 12.39	\$ -187.89

Lehigh Acres Fire Control and Rescue District Cash in the Bank June 30, 2010

Bank Accounts

General Checking Bank Account: Interest Rate 0.22% (0.0022 multiplier)

General Funds	\$	2,075,070.76
User Fee Funds	\$	748,351.24
Suppression Fee Funds	\$	-
Sick Time Liability Funds	\$	113,000.00
William Ziegler Memorial Funds	\$	7,902.80
Paul J. Dube Paramedic Fund	\$	2,265.00
Everett T. Byer Funds	\$	11,164.70

Total Checking Account before Money Market Transfers:	\$	2,957,754.50
Net Money Market Transfers	\$	(2,358,060.14)
Total Checking Account after Money Market Transfers:	\$	599,694.36

Bus Money Market Bank Account: Interest Rate 0.22% (0.0022) \$ 14,975,153.91

Impact Fee Bank Account: Interest Rate .22% (0.0022) \$ 136,049.78

Total Cash Available: **\$ 15,710,898.05**

Lehigh Acres Fire Control and Rescue District
Lehigh Acres , Florida 33974
Reconciliation of Accounts
June 30, 2010
Page 1

GENERAL CHECKING BANK ACCOUNT: (Interest Rate: 0.22% - 0.0022 multiplier)

Balance	June 1, 2010		\$ 264,637.29
<u>Income:</u>			\$ 1,008,800.62
Ad Valorem Taxes:	\$	831,523.85	
Interest:	\$	160.73	
Donations:	\$	-	
Inspection Fees:	\$	1,816.20	
User Fees:	\$	95,534.89	
Grants:	\$	69,462.00	
Sales Tax Payable	\$	-	
William Ziegler Account	\$	-	
Paul J Dube Paramedic Fund	\$	-	
Miscellaneous Income:	\$	6,063.88	
Report Copies:	\$	129.00	
CPR	\$	160.00	
USAR Reimbursement	\$	3,410.81	
Cobra	\$	2,192.07	
Bond Reimbursement (Guzman)	\$	172.00	
Proceeds from Insurance:		-	
<u>Health Insurance:</u>			\$ 4,239.07
Bartley		45.92	
Cardoza		314.25	
Jackman		1,432.68	
Haugh		1,277.81	
Kutz		293.39	
Gonzalez		-	
Pcolar		875.02	
<u>Transfers:</u>			\$ 236,502.18
	Net Transfers		
<u>Checks:</u>			\$ (665,747.95)
Accounts Payable (see accompanying check list):	\$	(352,804.74)	
Ambulance Refunds	\$	-	
Child Support Payment	\$	(4,021.07)	
Payroll:	\$	(308,922.14)	
<u>Payroll tax deposits:</u>			\$ (146,961.00)
<u>Retirement Contribution:</u>			\$ (97,016.74)
<u>Adjusting entries:</u>			\$ (520.04)
Credit Card Processing Fee		(35.21)	
Account Analysis Fee		(484.83)	
Ending balance :	June 30, 2010		<u>\$ 599,694.36</u>

**Lehigh Acres Fire Control and Rescue District
Accounts Payable and Ambulance Refund Check Register
June 30, 2010**

<u>CHECK NUMBER</u>	<u>CHECK DATE</u>	<u>NAME</u>	<u>CHECK AMOUNT</u>
045604	6/1/2010	4 - Directions	560.00
045605	6/1/2010	Vision Ace	44.91
045606	6/1/2010	Alva Fire Department	125.00
045607	6/1/2010	AT&T Mobility	16.95
045608	6/1/2010	Comcast	101.20
045609	6/1/2010	Communication Conexxions of FI	95.00
045610	6/1/2010	CRS Technology	1,088.75
045611	6/1/2010	DIRECTV	98.98
045612	6/1/2010	CenturyLink Communications Inc	2.72
045613	6/1/2010	FedEx	30.24
045614	6/1/2010	FGUA	69.00
045615	6/1/2010	Florida Fire Systems, LLC	120.00
045616	6/1/2010	Hall-Mark Fire Apparatus, Inc.	257.52
045617	6/1/2010	Hill Manufacturing Co., Inc.	56.73
045618	6/1/2010	Joseph Lemmons	4,000.00
045619	6/1/2010	Henry MacArty	145.00
045620	6/1/2010	Nationwide Retirement Solution	6,974.13
045621	6/1/2010	Richard W. Pringle, P.A.	2,150.44
045622	6/1/2010	Signs in One Day	10.00
045623	6/1/2010	Suncoast Schools Fed. Cr. Un.	26,306.84
045624	6/1/2010	Ten-8 Fire Equipment Inc.	924.60
045625	6/1/2010	Waste Management	972.29
045626	6/1/2010	Worthington Sprinklers	156.50
045627	6/7/2010	Bound Tree Medical, LLC	953.29
045628	6/7/2010	BTU Services, Inc.	953.61
045629	6/7/2010	CRS Technology	780.25
045630	6/7/2010	CS Service Experts	166.50
045631	6/7/2010	DIRECTV	202.96
045632	6/7/2010	Centurylink	2,495.60
045633	6/7/2010	FGUA	201.08
045634	6/7/2010	Auto Parts of Lehigh Inc.	59.56
045635	6/7/2010	Konica Minolta Bus Solutions	66.75
045636	6/7/2010	Nextel Communications	565.45
045637	6/7/2010	Praxair Distribution SE, LLC	423.40
045638	6/7/2010	Reliance Standard Life Ins. Co	6,080.91
045639	6/7/2010	Ryan Petroleum	4,447.81
045640	6/7/2010	TECHNO PLY, LTD	1,871.76
045641	6/7/2010	Wallace International Trucks	1,569.92
045642	6/15/2010	Bouchard Insurance	12,187.00
045643	6/15/2010	Bound Tree Medical, LLC	2,135.51
045644	6/15/2010	CDW Government, Inc.	879.00
045645	6/15/2010	CRS Technology	142.50
045646	6/15/2010	CS Service Experts	131.86
045647	6/15/2010	Centurylink	320.29
045648	6/15/2010	Henry Schein Inc.	180.00
045649	6/15/2010	Kimball Midwest	25.24
045650	6/15/2010	Kunkel Miller & Hament	3,354.00
045651	6/15/2010	LCEC	704.62

**Lehigh Acres Fire Control and Rescue District
Accounts Payable and Ambulance Refund Check Register
June 30, 2010**

<u>CHECK NUMBER</u>	<u>CHECK DATE</u>	<u>NAME</u>	<u>CHECK AMOUNT</u>
045652	6/15/2010	Physio-Control, Inc.	4,558.91
045653	6/15/2010	Konica Minolta Bus Solutions	143.06
045654	6/15/2010	Nationwide Retirement Solution	6,974.13
045655	6/15/2010	The News-Press - Ft. Myers	156.40
045656	6/15/2010	Office Depot	430.42
045657	6/15/2010	Praxair Distribution SE, LLC	1,057.26
045658	6/15/2010	Professional Adjustment Corp.	614.79
045659	6/15/2010	Sprint	750.99
045660	6/15/2010	Suncoast Schools Fed. Cr. Un.	23,506.84
045661	6/15/2010	SW Florida Prof. Firefighters	4,312.24
045662	6/15/2010	United Healthcare	99,552.08
045663	6/15/2010	Ben Van Klingerren	20.40
045664	6/15/2010	Wallace International Trucks	1,676.69
045665	6/21/2010	Donald R. Adams, Sr.	36.00
045666	6/21/2010	ALTEC	305.00
045667	6/21/2010	Bound Tree Medical, LLC	1,317.85
045668	6/21/2010	CRS Technology	1,258.75
045669	6/21/2010	Elite Fire & Safety Equipment	2,775.00
045670	6/21/2010	CenturyLink Communications Inc	95.15
045671	6/21/2010	EMSAR of South Florida	333.00
045672	6/21/2010	FGUA	402.12
045673	6/21/2010	Henry Schein Inc.	19.20
045674	6/21/2010	INDEPENDANT PLUMBING & DRAII	305.00
045675	6/21/2010	Ken Wilkinson Property App.	31,922.33
045676	6/21/2010	LCEC	4,254.86
045677	6/21/2010	Physio-Control, Inc.	97.75
045678	6/21/2010	Notary Public Underwriters	125.26
045679	6/21/2010	Praxair Distribution SE, LLC	211.70
045680	6/21/2010	Preferred Governmental	19,149.89
045681	6/21/2010	Richard W. Pringle, P.A.	1,700.00
045682	6/21/2010	Ryan Petroleum	5,221.50
045683	6/21/2010	Sam's Club	826.95
045684	6/21/2010	Standard Insurance Company	4,454.00
045685	6/21/2010	Wallace International Trucks	403.45
045686	6/28/2010	ALTEC	315.00
045687	6/28/2010	Bound Tree Medical, LLC	1,543.47
045688	6/28/2010	CDW Government, Inc.	717.00
045689	6/28/2010	Comcast	105.80
045690	6/28/2010	CRS Technology	142.50
045691	6/28/2010	CS Service Experts	453.60
045692	6/28/2010	DIRECTV	98.96
045693	6/28/2010	CenturyLink	6.44
045694	6/28/2010	FGUA	74.25
045695	6/28/2010	Flonda Fire Systems, LLC	120.00
045696	6/28/2010	Hamilton's Uniforms	419.96
045697	6/28/2010	Henry Schein Inc.	222.32
045698	6/28/2010	Kunkel Miller & Hamant	6,942.00
045699	6/28/2010	Lee County BOCC	12.21

**Lehigh Acres Fire Control and Rescue District
Accounts Payable and Ambulance Refund Check Register
June 30, 2010**

<u>CHECK NUMBER</u>	<u>CHECK DATE</u>	<u>NAME</u>	<u>CHECK AMOUNT</u>
045700	6/28/2010	LCEC	1,988.19
045701	6/28/2010	LeeSar Regional Service Center	117.85
045702	6/28/2010	LMHS	45.00
045703	6/28/2010	Physio-Control, Inc.	388.50
045704	6/28/2010	Nationwide Retirement Solution	6,974.13
045705	6/28/2010	Praxair Distribution SE, LLC	158.64
045706	6/28/2010	Royal Chemical, Inc.	669.93
045707	6/28/2010	Suncoast Schools Fed. Or Un.	28,506.84
045708	6/28/2010	TECHNO PLY, LTD	936.88
045709	6/28/2010	Worthington Sprinklers	280.76
045710	6/28/2010	WTEC	4.20
REPORT TOTAL			350,322.17

Lehigh Acres Fire Control and Rescue District
Lehigh Acres , Florida 33974
Reconciliation of Accounts
June 30, 2010

MONEY MARKET BANK ACCOUNT: (Interest Rate: 0.22% - 0.0022 multiplier)

Balance	June 1, 2010	\$	15,205,798.30
Deposits		\$	3,135.76
Transfers In:	From Checking	\$	-
	From Impact Fees	\$	12.12
Transfers Out:		\$	(236,502.18)
Interest			2,709.91
Payments:		\$	-
Ending balance :	June 30, 2010	\$	<u>14,975,153.91</u>

**Lehigh Acres Fire Control and Rescue District
Lehigh Acres , Florida 33974
Reconciliation of Accounts
June 30, 2010**

IMPACT FEE MONEY MARKET BANK ACCOUNT: (Interest Rate: 0.22% - 0.0022 multiplier)

Balance	June 1, 2010	\$	136,037.30
Deposits		\$	-
Transfers out to Money Market Account		\$	(12.12)
Construction Loan Payment		\$	-
Interest		\$	24.60
Ending balance :	June 30, 2010	\$	<u>136,049.78</u>

Lehigh Acres Fire Control and Rescue District Ambulance User Fees Billed & Outstanding June 30, 2010

Net A/R - User Fees / Collections @ 5/31/10	\$	290,762.01
--	-----------	-------------------

JUNE ACTIVITY

Ambulance Charges - June	\$	177,091.00
Less: Gov't Write-Off's, etc.	\$	(40,577.46)
Less: Cash Received (applied to A/R balances)	\$	(90,247.72)
Less: Adjustment to Allowance	\$	<u>(55,129.95)</u>

(Adjusted) Net A/R - User Fees / Collections @ 6/30/10	\$	281,897.88
---	-----------	-------------------

A/R - User Fees	\$	1,163,540.41
A/R - Collection Accounts	\$	1,725,830.46

Allowance - User Fees	\$	(881,642.53)
Allowance - Collection Accounts	\$	<u>(1,725,830.46)</u>

(Adjusted) Net A/R - User Fees / Collections @ 6/30/10	\$	281,897.88
---	-----------	-------------------

**Ambulance Collections
LAFD**

	Collections per month	Cumulative collections	projected Average annual collections	
9-Oct	\$ 80,971.89	\$ 80,971.89	\$ 971,662.68	(80,973.89 x 12/1)
9-Nov	\$ 99,826.38	\$ 180,798.27	\$ 1,084,789.62	(180,798.27 x 12/2)
9-Dec	\$ 91,191.83	\$ 271,990.10	\$ 1,087,960.40	(271,990.10 x 12/3)
10-Jan	\$ 75,138.01	\$ 347,128.11	\$ 1,041,384.33	(347,128.11 x 12/4)
10-Feb	\$ 102,123.81	\$ 449,251.92	\$ 1,078,204.61	(449,251.92 x 12/5)
10-Mar	\$ 95,625.54	\$ 544,877.46	\$ 1,089,754.92	(544,877.46 x 12/6)
10-Apr	\$ 105,501.88	\$ 650,379.34	\$ 1,114,936.01	(650,379.34 X 12/7)
10-May	\$ 96,631.22	\$ 747,010.56	\$ 1,120,515.84	(747,010.56 x 12/8)
10-Jun	\$ 95,534.89	\$ 842,545.45	\$ 1,123,393.93	(842,545.45 x 12/9)

Monthly Average	\$ 93,616.16
--------------------	--------------

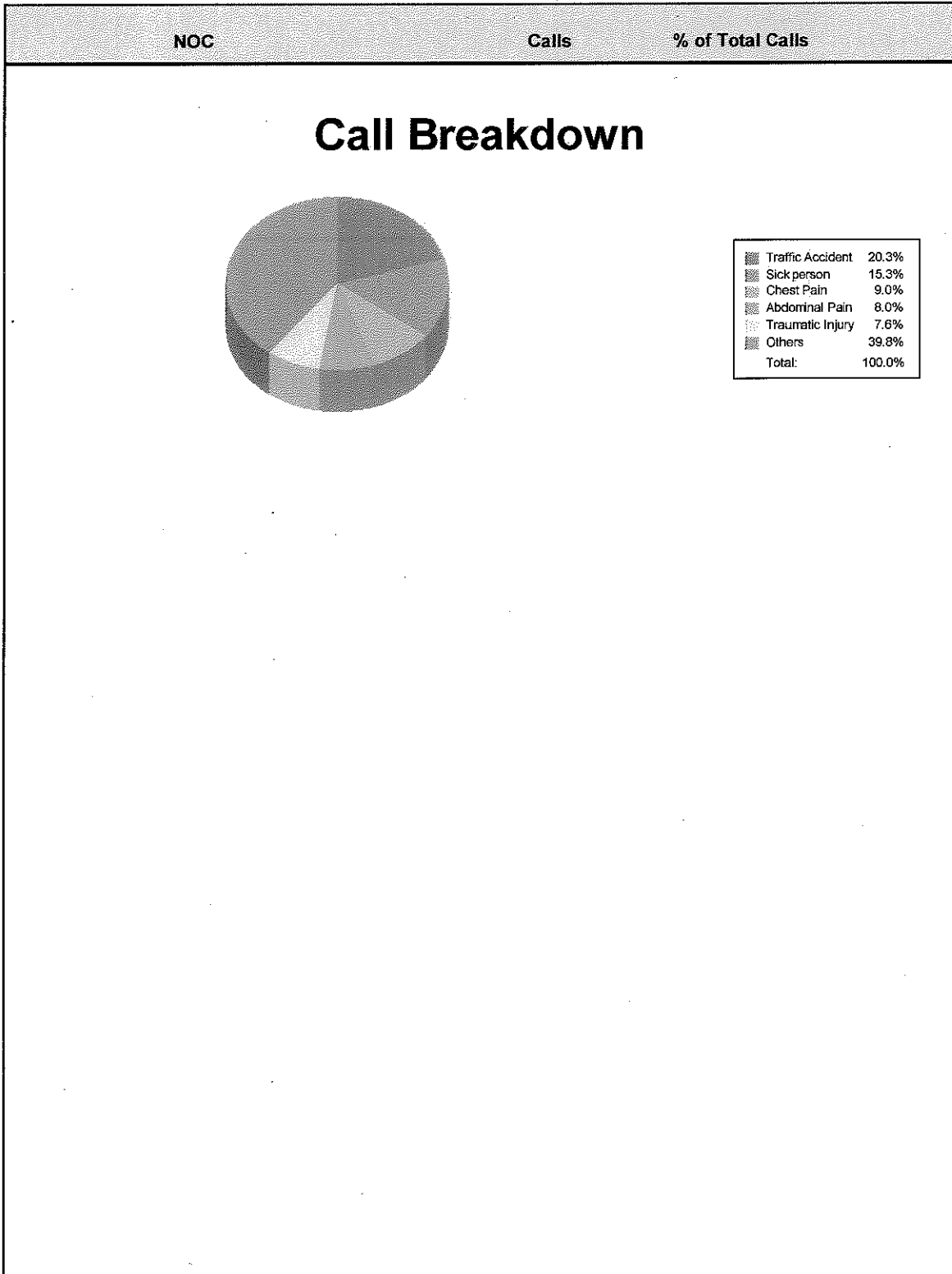
Nature of Call at Scene

(Summary)

Date Range: 6/1/2010 to 8/30/2010

NOC	Calls	% of Total Calls
Abdominal Pain	40	7.97%
Allergies	4	0.80%
Animal Bite	1	0.20%
Assault	12	2.39%
Back Pain	9	1.79%
Breathing Problem	35	6.97%
Cardiac Arrest	5	1.00%
Chest Pain	45	8.96%
Choking	3	0.60%
Convulsions/Seizure	14	2.79%
Diabetic Problem	10	1.99%
Dizziness	8	1.59%
Electrocution	1	0.20%
Fall Victim	19	3.78%
Headache	4	0.80%
Heart Problems	3	0.60%
Heat/Cold Exposure	1	0.20%
Hemorrhage/Laceration	7	1.39%
Ingestion/Poisoning	13	2.59%
Pregnancy/Childbirth	2	0.40%
Psychiatric Problem	16	3.19%
Sick person	77	15.34%
Stroke/CVA	1	0.20%
Traffic Accident	102	20.32%
Transfer/Interfacility/Palitive Care	7	1.39%
Traumatic Injury	38	7.57%
Unconscious/Fainting	17	3.39%
Unknown Problem Man Down	8	1.59%
SYSTEM TOTAL	502	100%

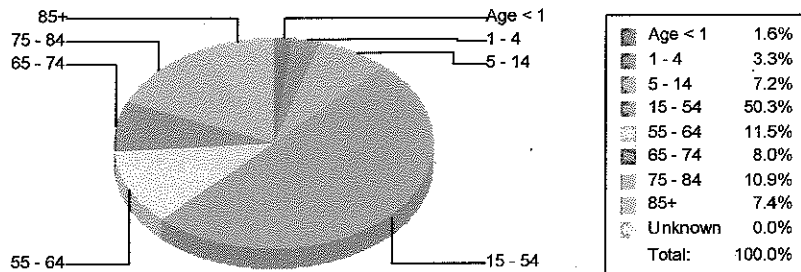
Date Range: 6/1/2010 to 6/30/2010



Age Profile

Date Range: 6/1/2010 to 6/30/2010

Age Range	Count	Percentage
Under	8	1.58%
1 to 4	17	3.35%
5 to 14	37	7.30%
15 to 54	259	51.08%
55 to 64	59	11.64%
65 to 74	41	8.09%
75 to 84	56	11.05%
85 or greater	38	7.50%
Unknown	0	0.00%
Total:	515	100.00%



Transports by Destination

(Summary)

Date Range: 6/1/2010 to 6/30/2010

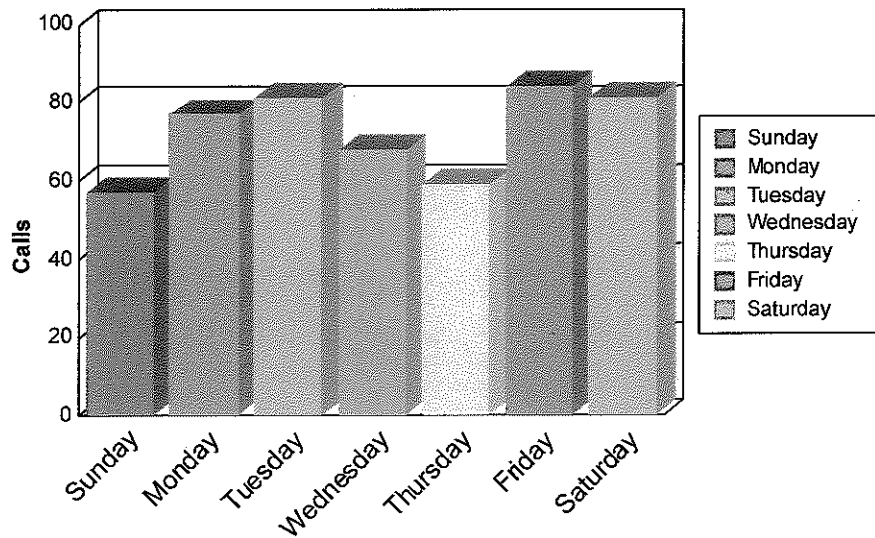
Destination		Transports	%
	GCH	79	24%
	LMH	22	7%
	LMHP	18	5%
	LRMC	209	64%
SYSTEM TOTAL	TOTAL TRANSPORTS	328	100%

Calls By Day

Date Range: 6/1/2010 to 6/30/2010

Day of Week	Calls	Calls by Day
Sunday	57	11.2%
Monday	77	15.2%
Tuesday	81	16.0%
Wednesday	68	13.4%
Thursday	59	11.6%
Friday	84	16.6%
Saturday	81	16.0%
Total:	507	100%

Number of Calls by Day



Date Created: 7/14/2010
Report Name: totIncm.rpt

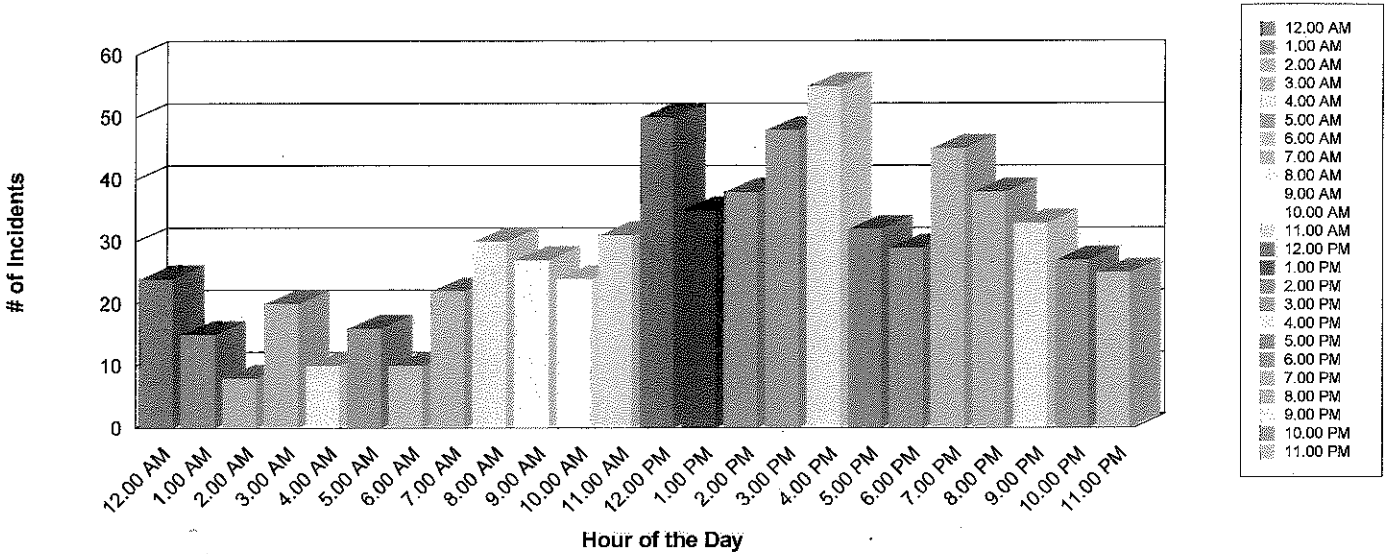
Total Runs

(By Month)

Date Range: 6/1/2010 to 6/30/2010

Month	Incidents
6/2010	
	Total Runs: 507
SYSTEM TOTAL	Total Runs: 507

Incident Totals by Hour



Hour of the Day: 12.00 AM

Total # of Incidents: 24 % of Total Incidents: 3.33%

Hour of the Day: 1.00 AM

Total # of Incidents: 15 % of Total Incidents: 2.17%

Hour of the Day: 2.00 AM

Total # of Incidents: 8 % of Total Incidents: 1.16%

Hour of the Day: 3.00 AM

Total # of Incidents: 20 % of Total Incidents: 2.89%

Hour of the Day: 4.00 AM

Total # of Incidents: 10 % of Total Incidents: 1.45%

Hour of the Day: 5.00 AM

Total # of Incidents: 16 % of Total Incidents: 2.32%

Hour of the Day: 6.00 AM

Total # of Incidents: 10 % of Total Incidents: 1.45%

Hour of the Day: 7.00 AM

Total # of Incidents: 22 % of Total Incidents: 3.18%

Hour of the Day: 8.00 AM

Total # of Incidents: 30 % of Total Incidents: 4.34%

Hour of the Day: 9.00 AM

Total # of Incidents: 27 % of Total Incidents: 3.91%

Hour of the Day: 10.00 AM

Total # of Incidents: 24 % of Total Incidents: 3.47%

Hour of the Day: 11.00 AM

Total # of Incidents: 31 % of Total Incidents: 4.49%

Hour of the Day: 12.00 PM		
Total # of Incidents:	50	% of Total Incidents: 7.24%
Hour of the Day: 1.00 PM		
Total # of Incidents:	35	% of Total Incidents: 5.07%
Hour of the Day: 2.00 PM		
Total # of Incidents:	38	% of Total Incidents: 5.50%
Hour of the Day: 3.00 PM		
Total # of Incidents:	48	% of Total Incidents: 6.95%
Hour of the Day: 4.00 PM		
Total # of Incidents:	55	% of Total Incidents: 7.96%
Hour of the Day: 5.00 PM		
Total # of Incidents:	32	% of Total Incidents: 4.63%
Hour of the Day: 6.00 PM		
Total # of Incidents:	29	% of Total Incidents: 4.20%
Hour of the Day: 7.00 PM		
Total # of Incidents:	45	% of Total Incidents: 6.51%
Hour of the Day: 8.00 PM		
Total # of Incidents:	38	% of Total Incidents: 5.50%
Hour of the Day: 9.00 PM		
Total # of Incidents:	33	% of Total Incidents: 4.78%
Hour of the Day: 10.00 PM		
Total # of Incidents:	27	% of Total Incidents: 3.91%
Hour of the Day: 11.00 PM		
Total # of Incidents:	25	% of Total Incidents: 3.62%
<u>Grand Total Incidents:</u>	<u>691</u>	



Lehigh Acres Fire Control & Rescue District

Fire Suppression Division Response Total

636 Thomas Sherwin Ave S
Phone: (239) 303-5300

Lehigh Acres, FL 33974
Fax: (239) 369-2436

Jun-10

Responses By Shift Avg Response Time

	June	June	YTD
Shift A:	35.0%	6.79	6.19
Shift B:	33.5%	6.62	6.58
Shift C:	31.5%	6.62	6.58

Lee County EMS Responses 33

Average Response Time in Minutes: 6.68 6.45

Incident Reports By Incident Type Summary

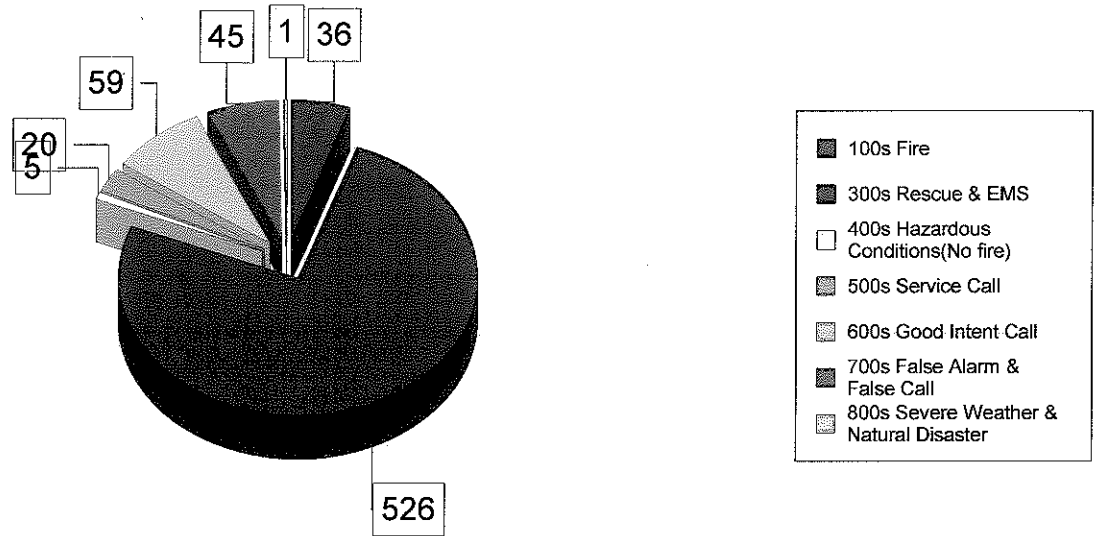
Incident Type	Total Incidents	YTD 2010	June-09	June-08
111 Building Fire	5	29	3	14
113 Cooking Fire, Confined to Container	0	3	1	1
118 Trash or Rubbish Fire, contained	0	0		1
130 Mobile Property (vehicle) fire, other	0	0		1
131 Passenger Vehicle Fire	3	22	10	6
138 Off-Road Vehicle or Heavy equipment	0	1		
140 Natural Vegetation Fire, other	0	3		1
141 Forest, Woods or Wildland Fire	3	10		5
142 Brush, or Brush and Grass Mixture Fire	20	70	16	17
143 Grass Fire	3	28		3
150 Outside Rubbish Fire, Other	0	2		
151 Outside Rubbish, Trash or Waste Fire	0	2		3
154 Dumpster or Other Outside Trash Receptacle fire	1	2		1
162 Outside Equipment fire	1	4		
251 Excessive Scorch Burns with no ignition	0	1		
300 Rescue, Emergency Medical Call (EMS) Call, Other	0	1	3	10
311 Medical Assist, Assist EMS Crews	33	100	2	19
321 EMS Call, Excluding Vehicle Accident With Injury	450	2699	411	319
322 Vehicle Accident With Injuries	24	151	26	20
323 Motor Vehicle/ Pedestrian Accident (MV Ped)	1	10	1	4
324 Motor Vehicle Accident With No Injuries	16	139	28	18
331 Lock-In	1	14	1	
352 Extrication of Victim(s) From Vehicle	1	4		
353 Removal of Victim(s) From Stalled Elevator	0	1		
410 Flammable gas or liquid condition, other	0	0		1
411 Gasoline or Other Flammable Liquid Spill	0	1	1	2
412 Gas Leak (natural gas or LLPG)	0	0	1	
413 Oil or Other Combustible Liquid Spill	0	2		
430 Radioactive Condition, other	0	0		1

440	Electrical Wiring/Equipment Problem	0	2		1
441	Heat from short circuit (wiring), defective/worn	0	2		
442	Overheated Motor	1	2		
444	Power Line Down	2	11	4	6
445	Arching, Shorted Electrical Equipment	2	9	2	2
481	Attempt to Burn	0	2		
500	Service Call, Other	0	3	3	2
510	Person in Distress, other	0	2		1
511	Lock-out	1	5	1	
531	Smoke or Odor Removal	1	11		3
541	Animal Problem	0	1		
542	Animal Rescue	0	2		
550	Public service assistance, other	4	9	3	3
551	Assist police or other governmental agency	0	7	1	
552	Police Matter	0	4		
553	Public Service	3	19	8	7
554	Assist Invalid	9	52	3	2
561	Unauthorized Burning	2	48	6	2
600	Good Intent Call, Other	14	45	9	8
611	Dispatched & Cancelled Enroute	36	197	26	14
621	Wrong Location	1	1		
622	No Incident Found on Arrival at Dispatch Address	4	9	2	
631	Authorized Control Burning	2	9		1
632	Prescribed Burn	2	3		
650	Steam, other gas mistaken for smoke, other	0	1		
651	Smoke Scare, Odor of Smoke	0	1	1	3
652	Steam, vapor, fog, or dust thought to be smoke	0	4		1
671	Hazmat Release Investigation W/No Hazmat	0	5		
700	False Alarm or False Call Other	21	151	24	33
710	Malicious, mischievous false call, other	0	2	1	3
711	Municipal Alarm System, Malicious False Alarm	0	1		2
713	Telephone, malicious false call	0	3		1
714	Central Station, malicious false call	0	4		
715	Local Alarm System, Malicious False Call	0	3		1
721	Bomb Scare -no bomb	1	1		
730	System malfunction, Other	5	18	1	2
733	Smoke Detector Activation Due to Malfunction	0	15	2	4
734	Heat Detector Activation due to malfunction	0	0		1
735	Alarm System Sounded Due to Malfunction	7	14	1	2
740	Unintentional Transmission of Alarm, Other	3	15	6	3
741	Sprinkler Activation, No Fire - Unintentional	0	1		
743	Smoke Detector Activation, No Fire - Unintentional	5	39	5	5
744	Detector Activation, No Fire - Unintentional	1	14	1	3
745	Alarm System Sounded, No Fire - Unintentional	2	29	9	2
814	Lightning Strike (no fire)	1	1		1
815	Severe Weather or Natural Disaster standby	0	0		1
911	Citizen Complaint	0	1		
Total		692	4077	623	567

Incident Report, By Type Of Incident

Lehigh Acres Fire Control & Rescue District - June 2010

Page 1 of 1



Graphed Items are sorted by Incident Type

Type Of Incident:	Total Of Incidents:	Percentage Value:
100 Series-Fire	36	5.20%
300 Series-Rescue & EMS	526	76.01%
400 Series-Hazardous Conditions(No fire)	5	0.72%
500 Series-Service Call	20	2.89%
600 Series-Good Intent Call	59	8.53%
700 Series-False Alarm & False Call	45	6.50%
800 Series-Severe Weather & Natural Disaster	1	0.14%

Grand Total: 692

Type Of Incident Most Frequent: 300 Series-Rescue & EMS

Print Date: 7/14/2010